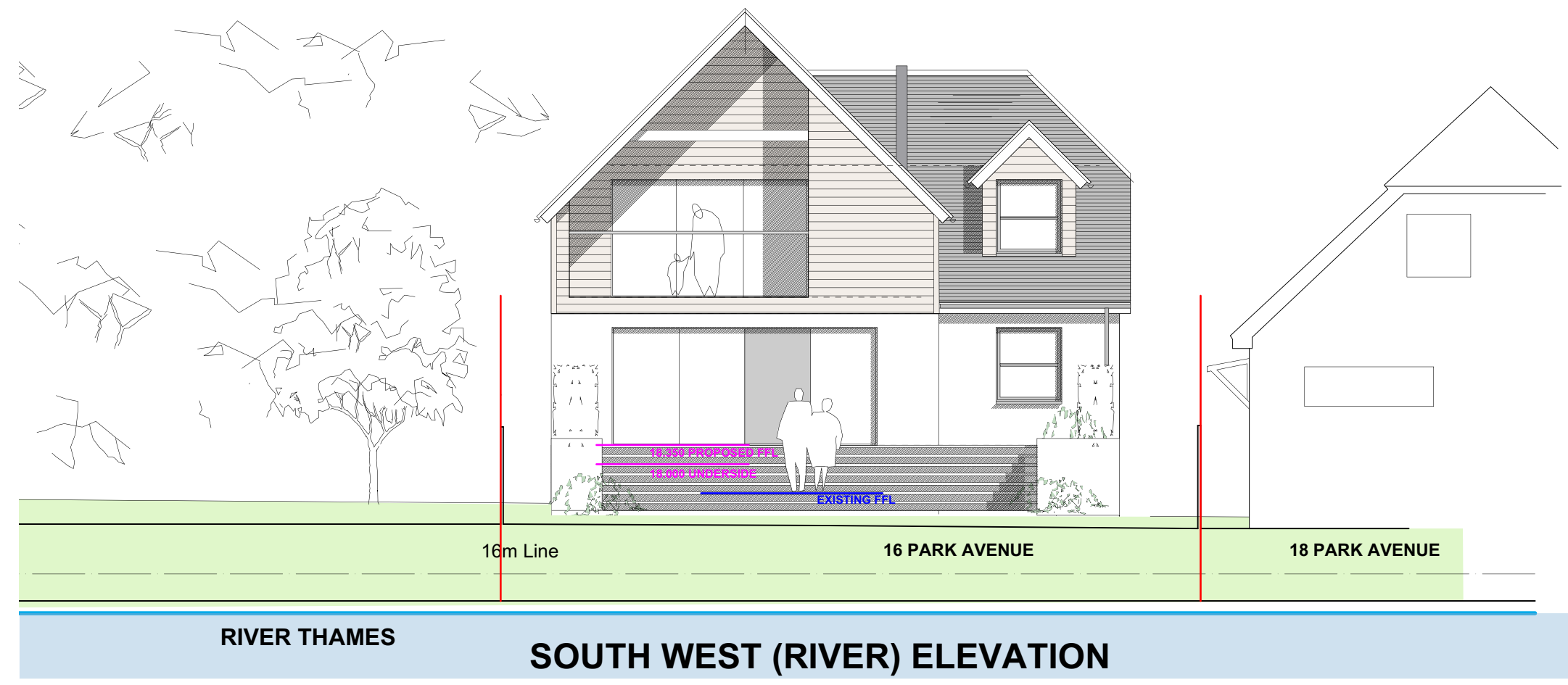
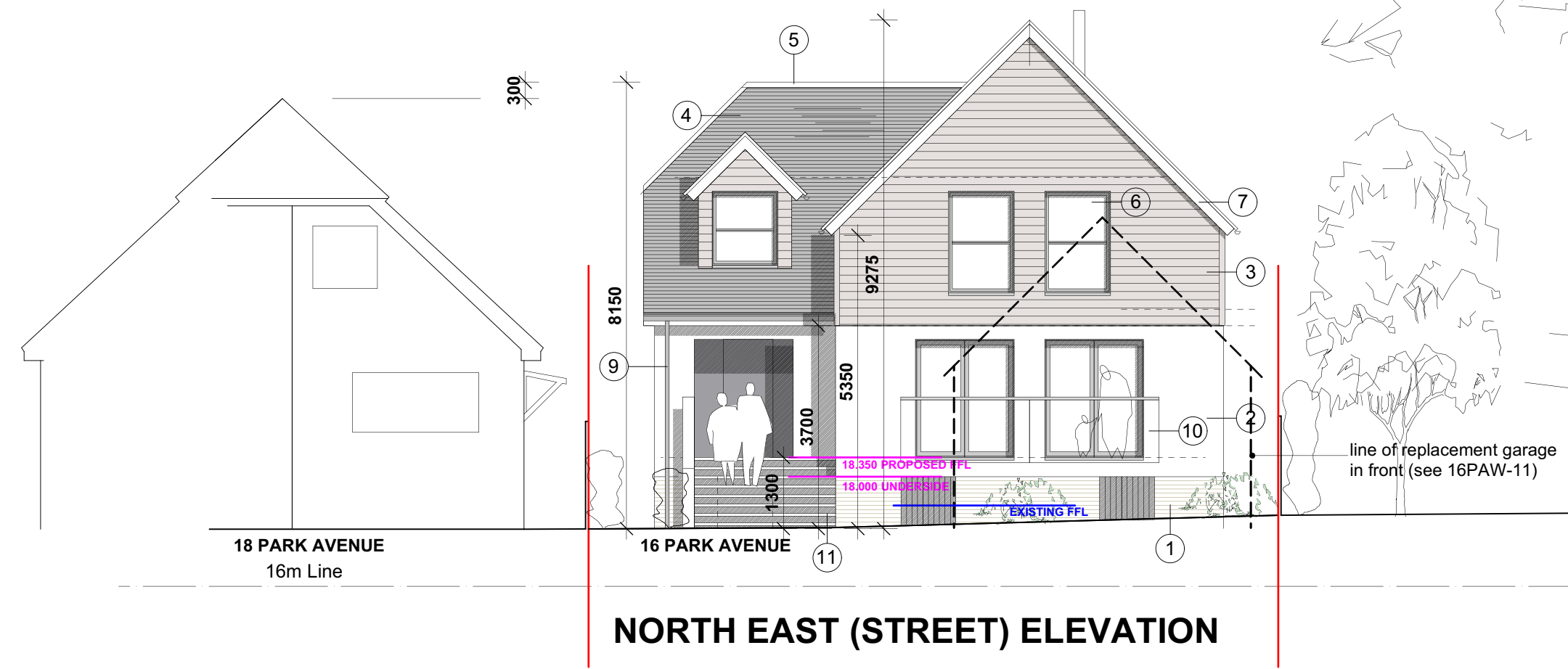


KEY TO MATERIALS:

- 1 - soft grey multi brick (Wienerberger/ Thorn 'Grijs Gesintered')
- 2 - painted sand cement render (white)
- 3 - fibre cement cladding (Cedral 'grey green')
- 4 - natural slate (Cupa 'H12')
- 5 - epdm/ lead crown roof
- 6 - painted softwood windows and doors (light grey)
- 7 - painted softwood barge boards/ soffits (white)
- 8 - velux conservation rooflights
- 9 - black uPVC rainwater goods
- 10 - glass balustrade
- 11 - composite decking (Gronodec 'Premium silver')



PLANNING

Project 16 PARK AVENUE, WRAYSBURY, TW19 5ET		hitchcock architects ltd 18 The Avenue Sunbury-on-Thames Middx TW16 5ES m: 07855 522478 e: andrew@hitchcockarchitects.co.uk w: www.hitchcockarchitects.co.uk
Drawing PROPOSED FRONT/ REAR ELEVATIONS		
Drawing No. 16PAW-09	Scale 1:100 @ A3	Date 06.12.2022

